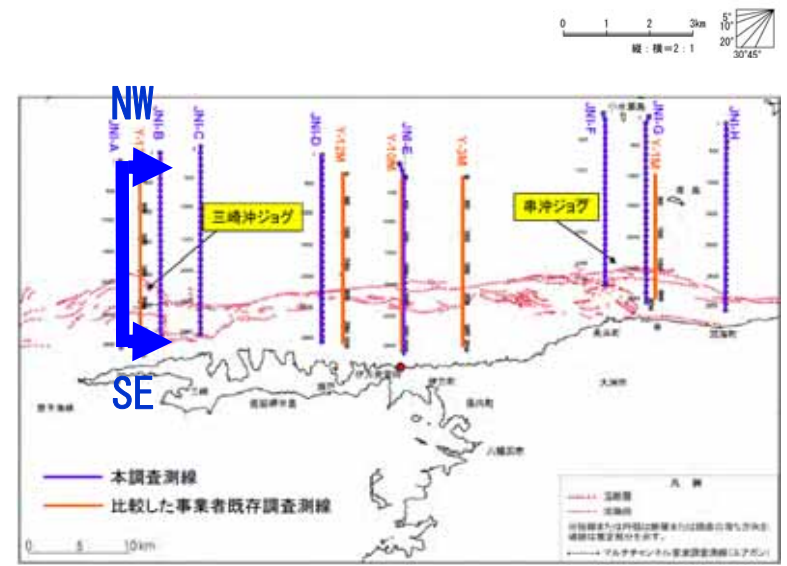
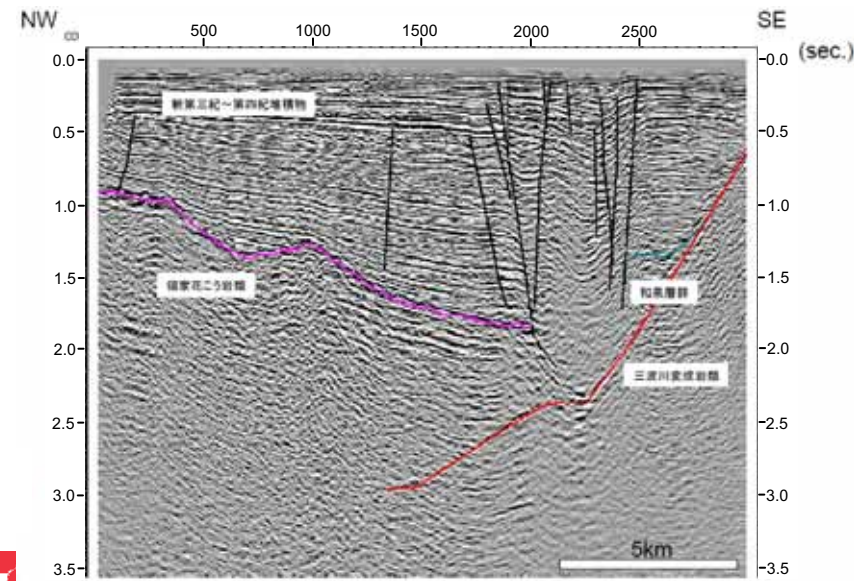
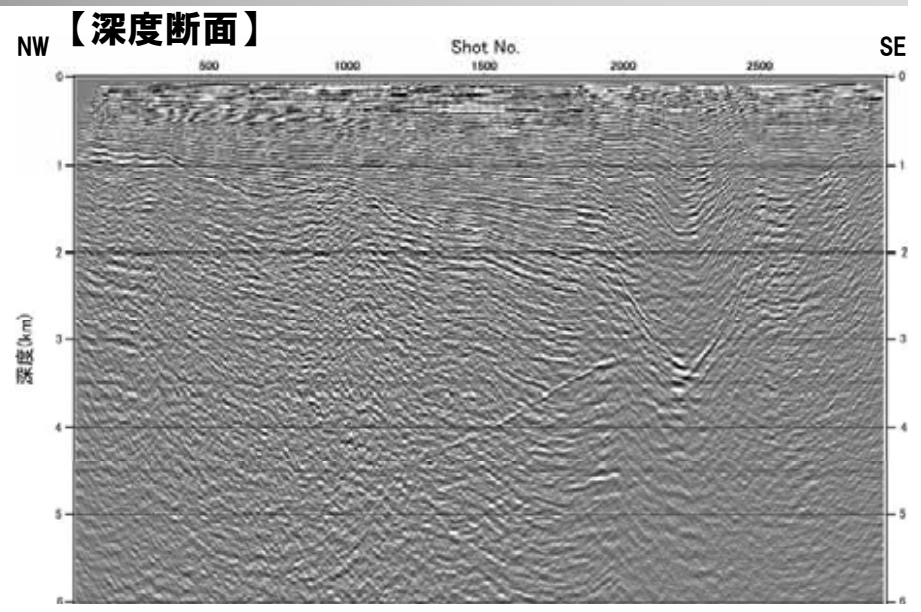
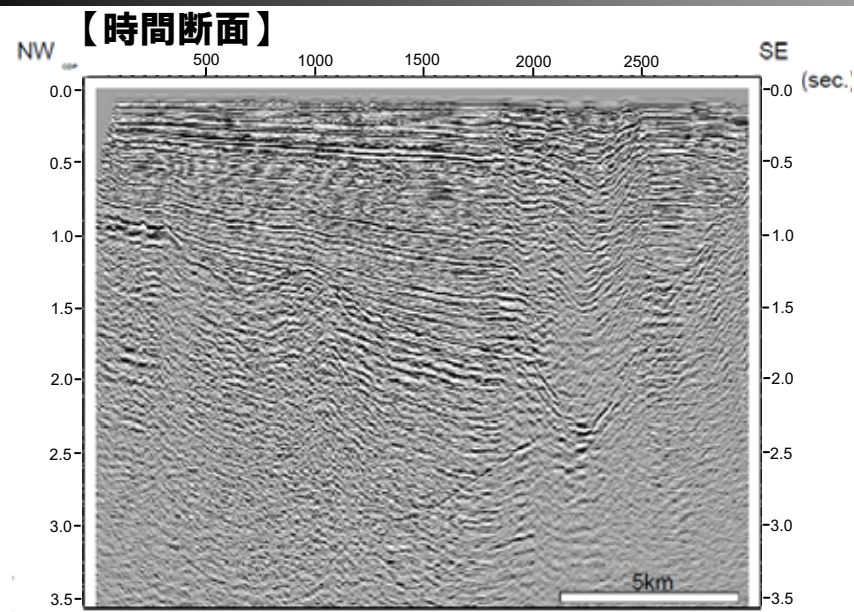


---

## II 4.3(3) アトリビュート解析結果 (原子力安全基盤機構保有データ)

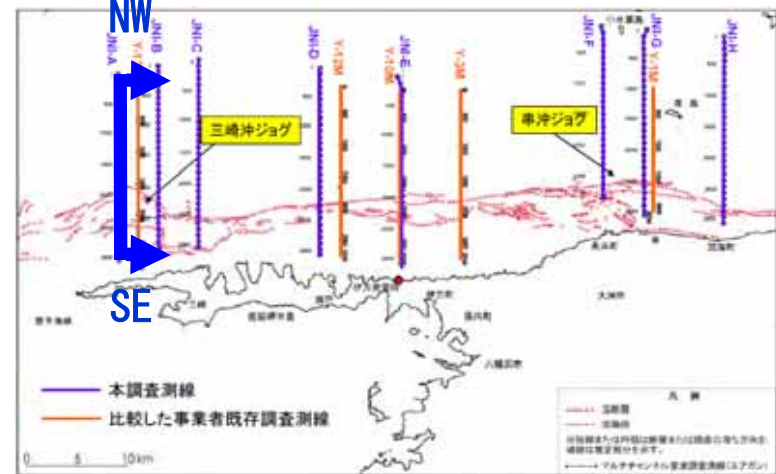
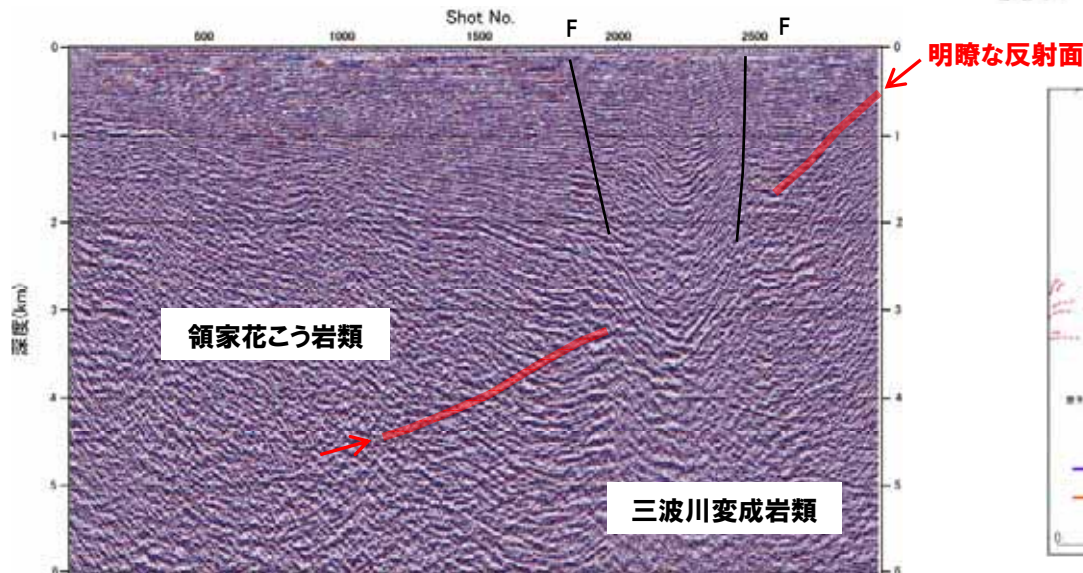
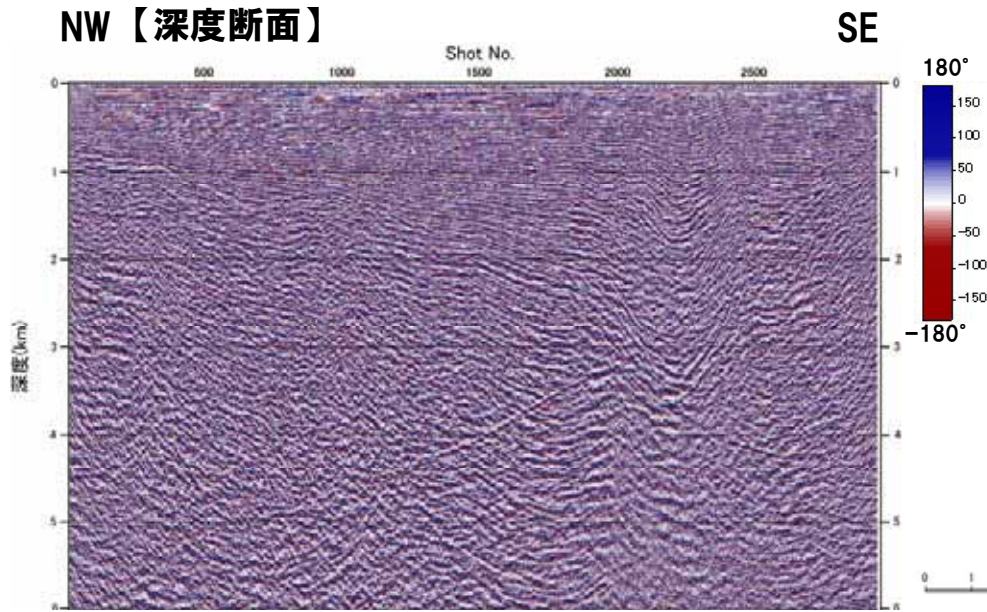
# II 4. 3 (3) - 1 振幅強度表示(JNI-A)

添付資料 図-37,38



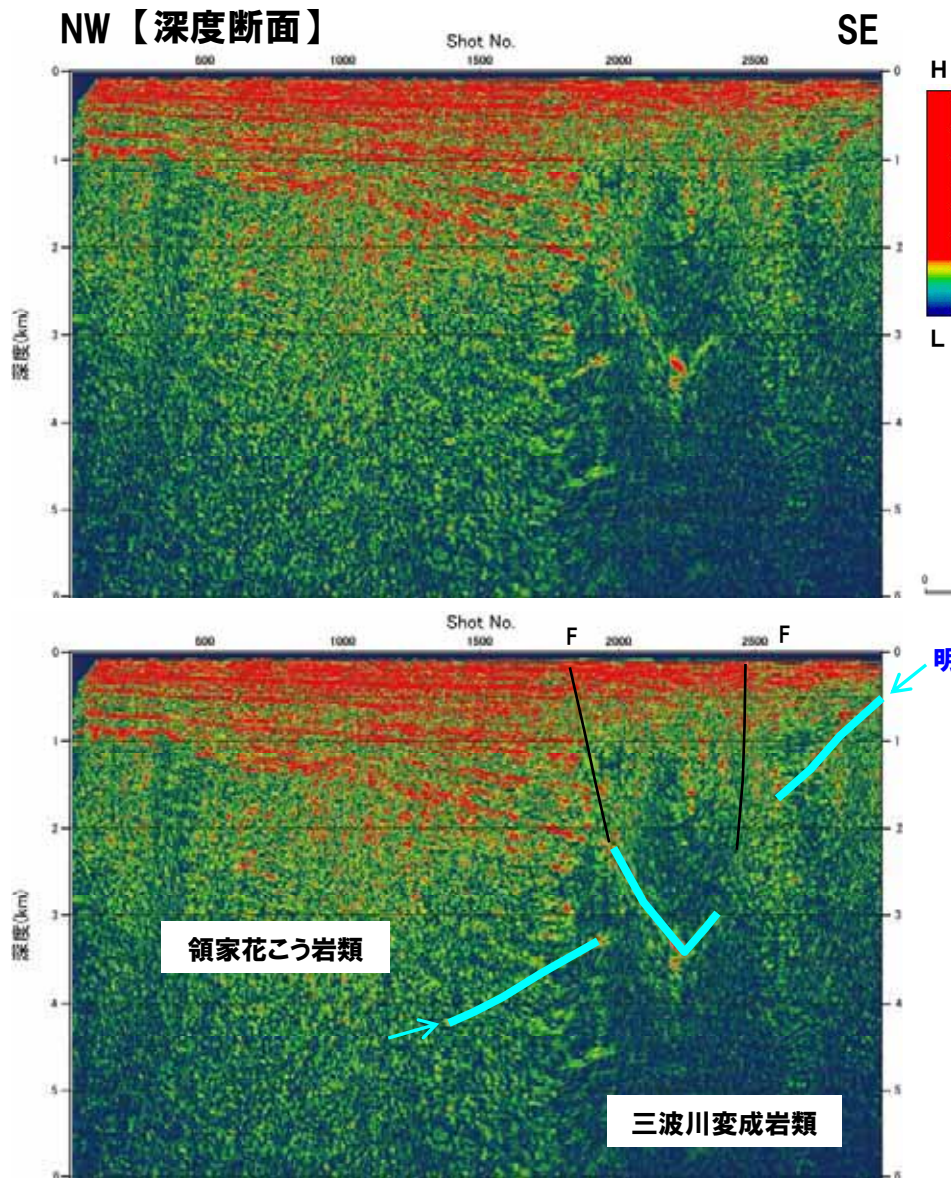


# II 4. 3 (3) - 1① 瞬間位相(JNI-A)

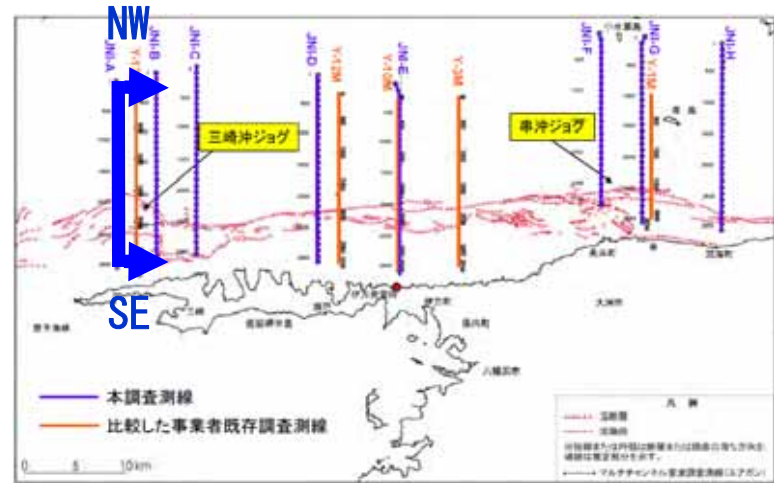


# II 4. 3 (3) - 1 ② エンベロープ(JNI-A)

添付資料 図-40



明瞭な反射面

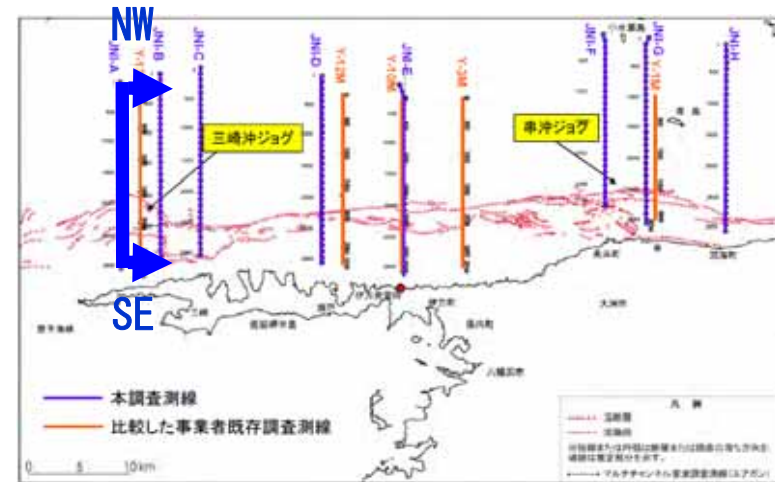
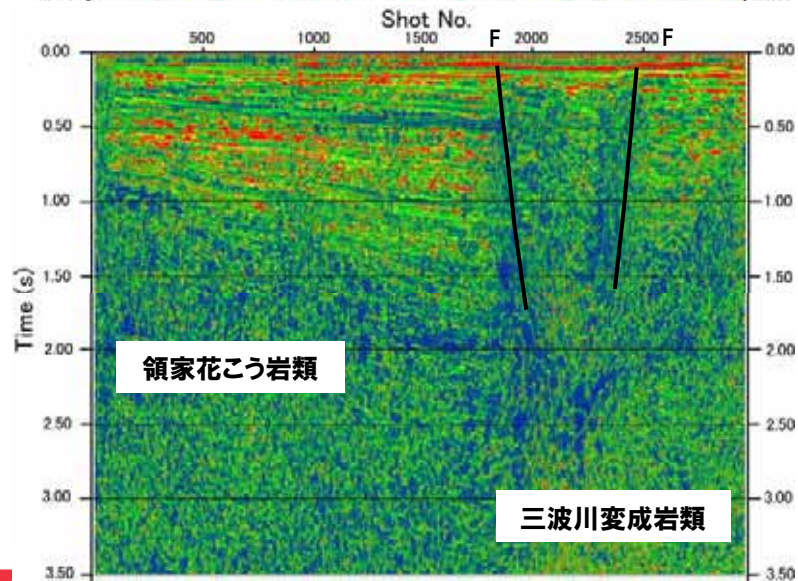
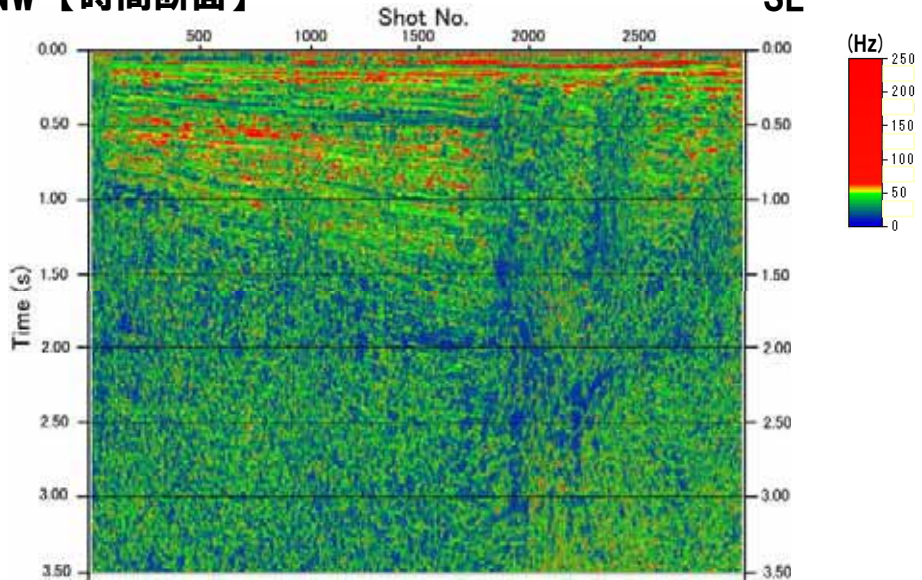




# II 4. 3 (3) - 1 ③ 瞬間周波数(JNI-A)

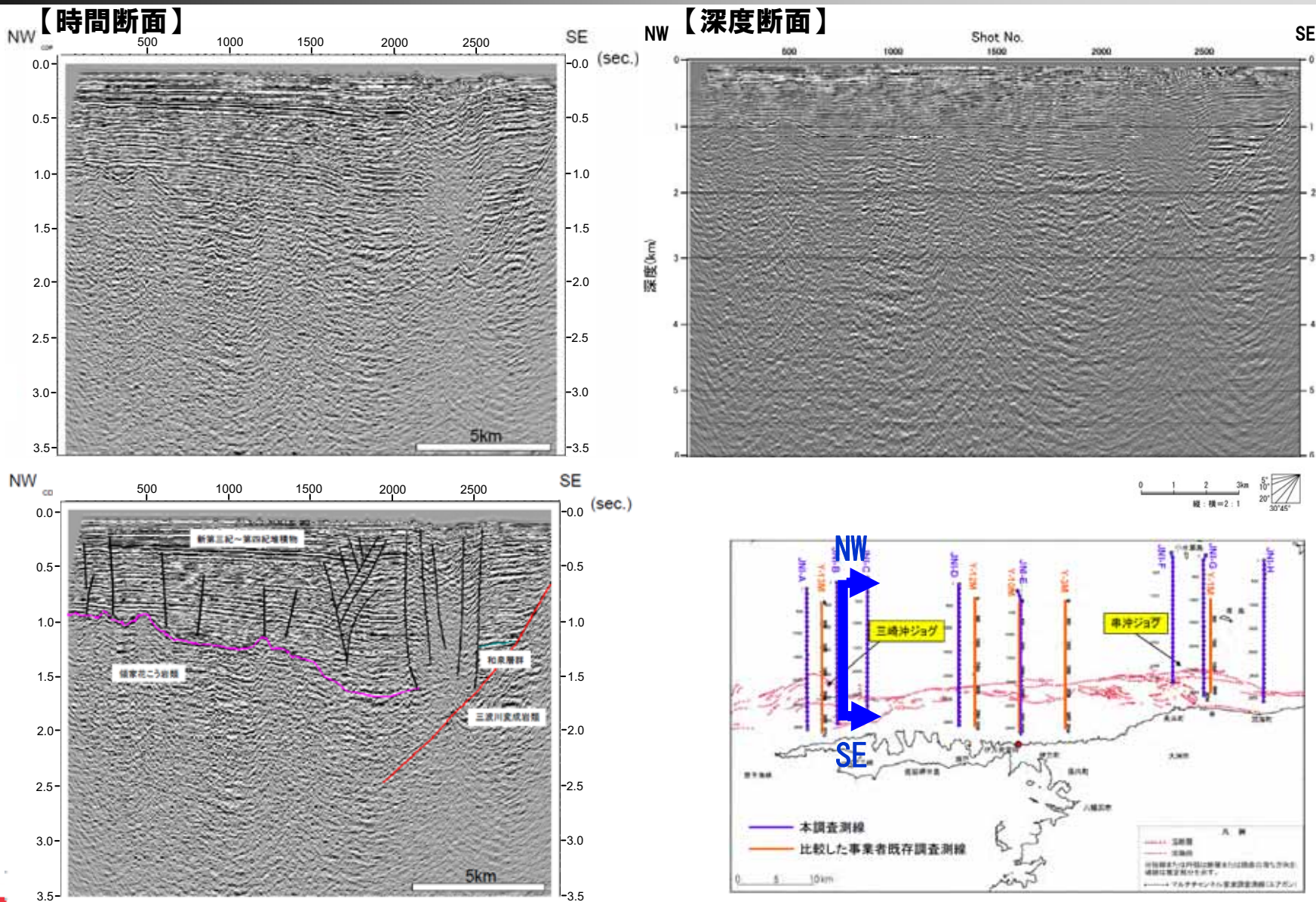
NW【時間断面】

SE



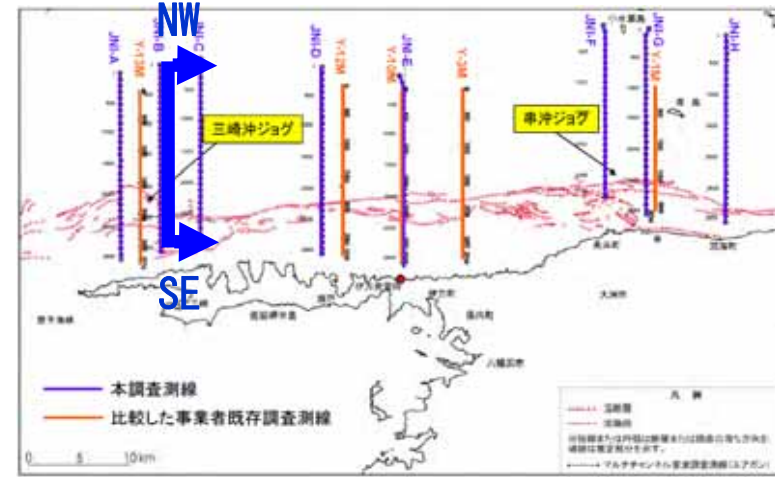
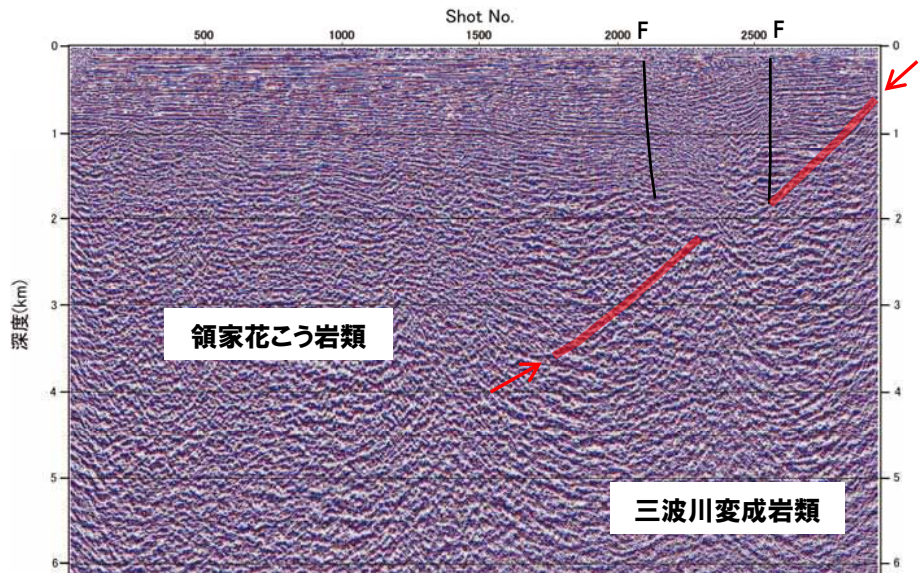
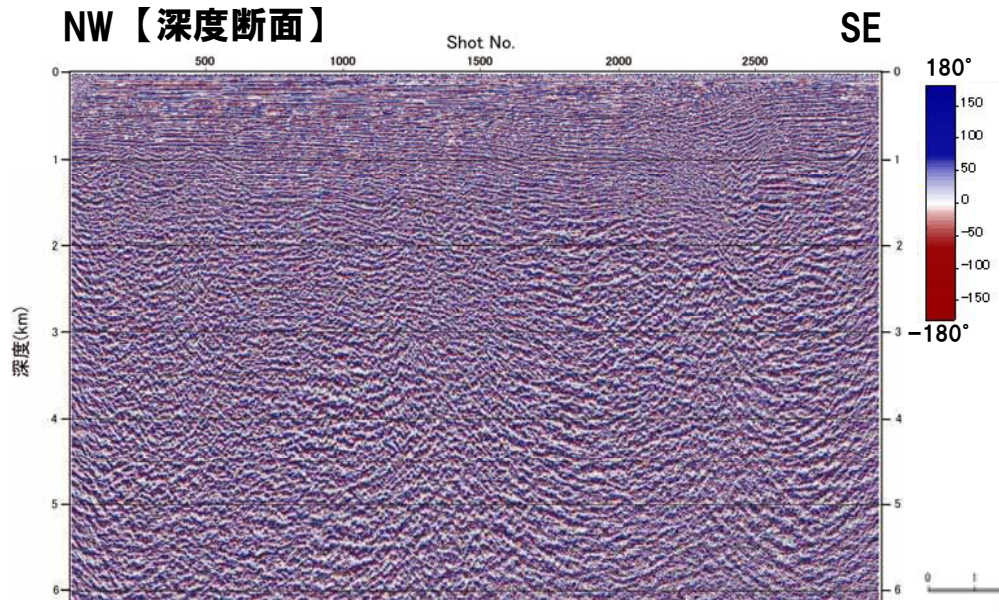
# II 4. 3 (3) - 2 振幅強度表示(JNI-B)

添付資料 図-42,43



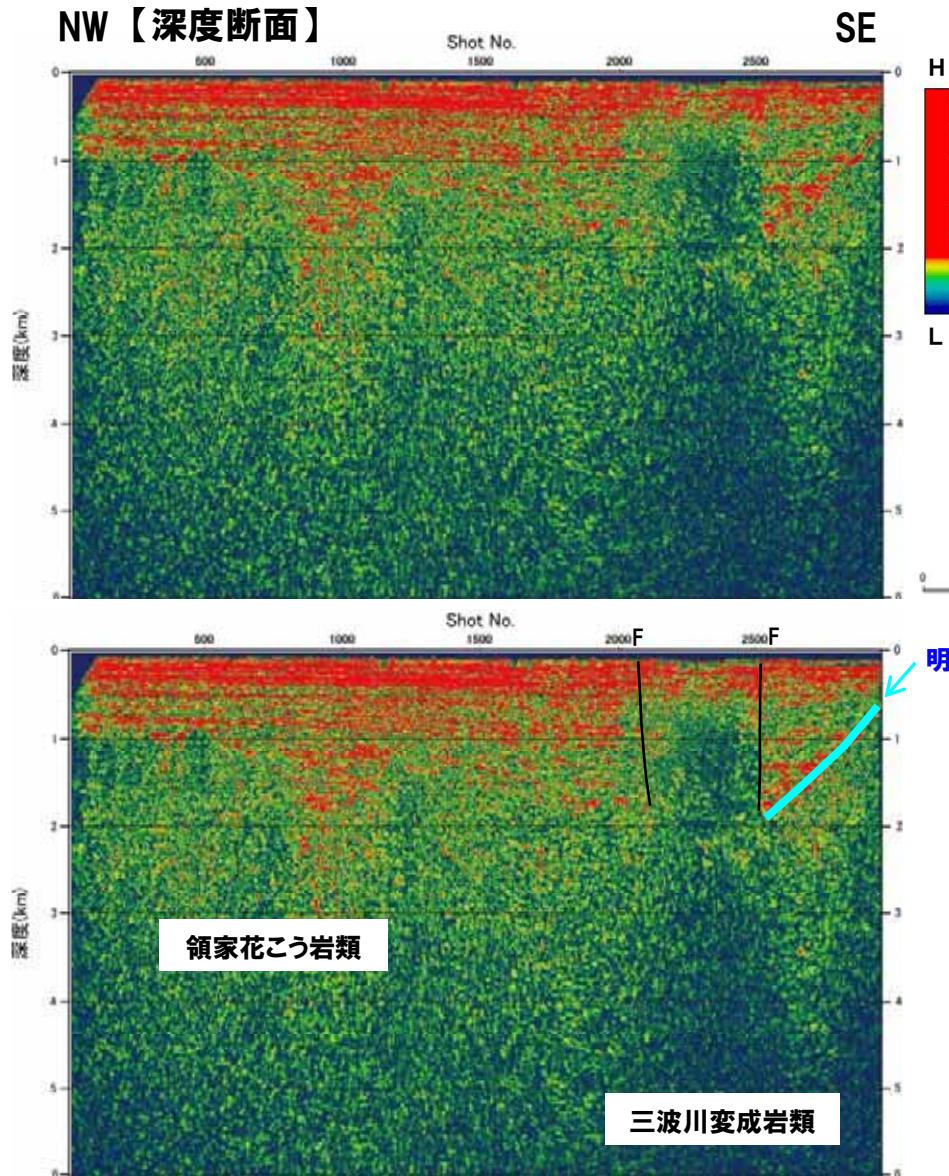


# II 4. 3 (3) - 2① 瞬間位相(JNI-B)

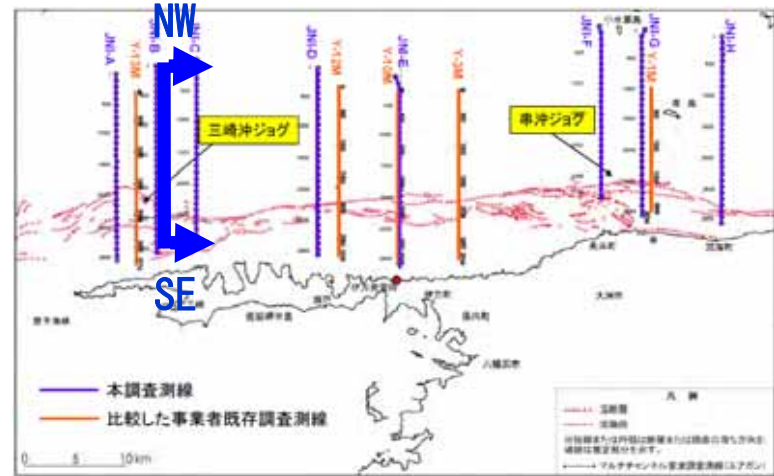




# II 4. 3 (3) - 2② エンベロープ(JNI-B)



明瞭な反射面

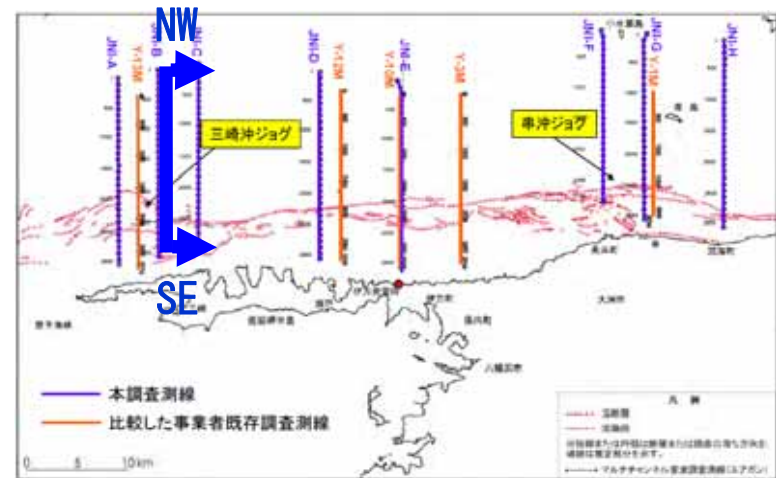
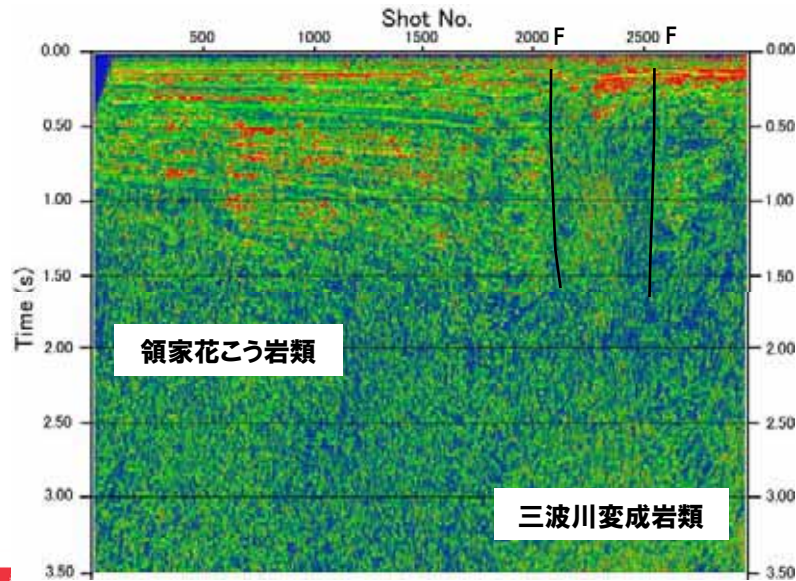
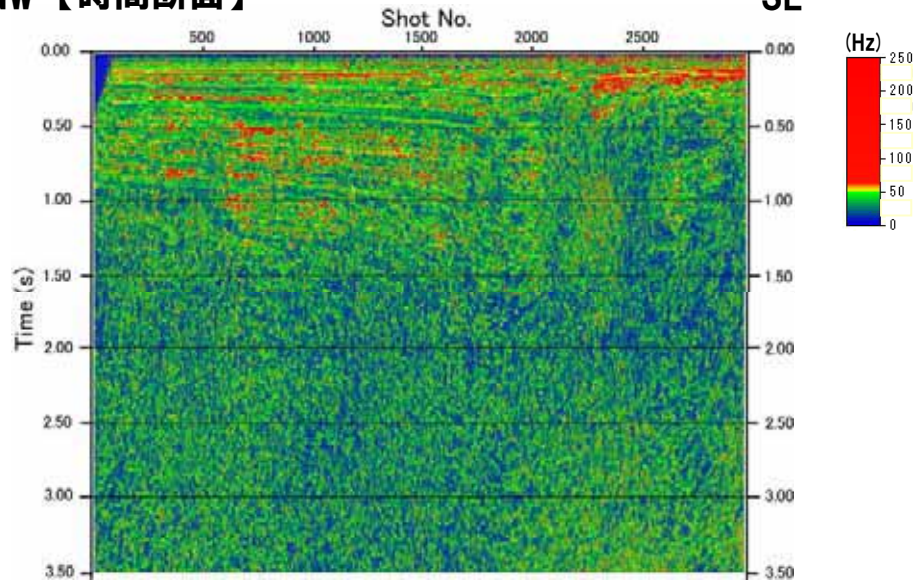




# II 4. 3 (3) - 2③ 瞬間周波数(JNI-B)

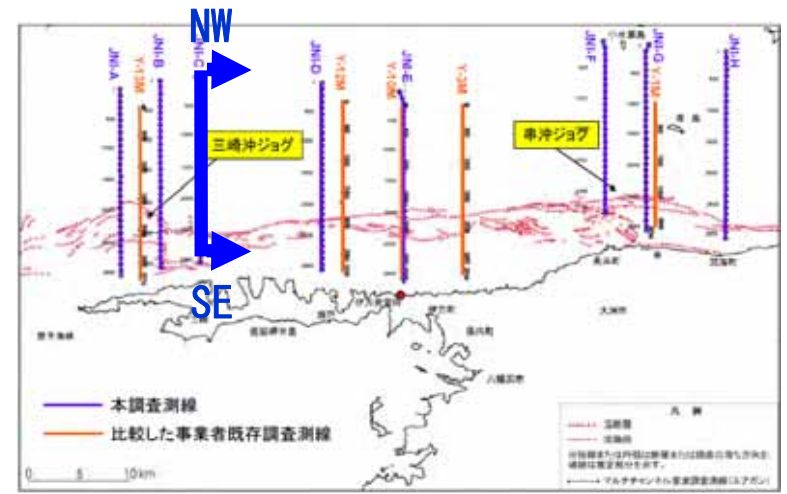
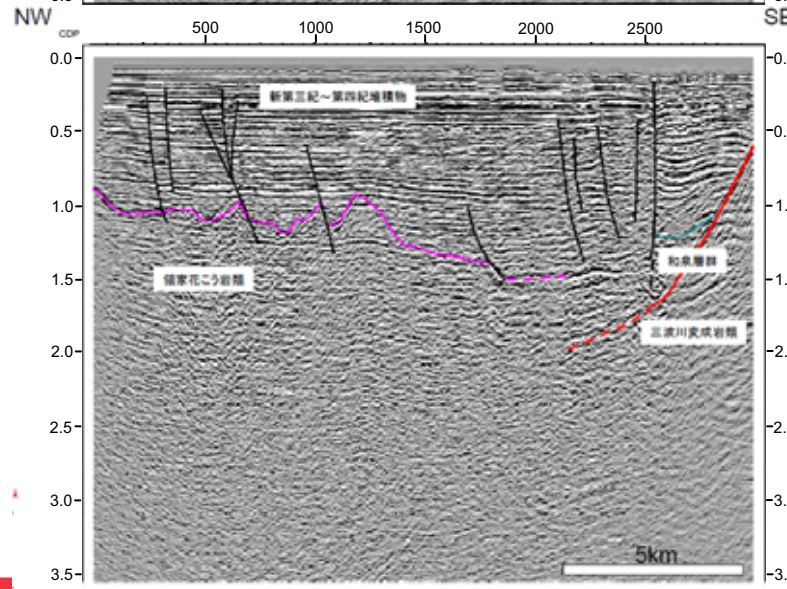
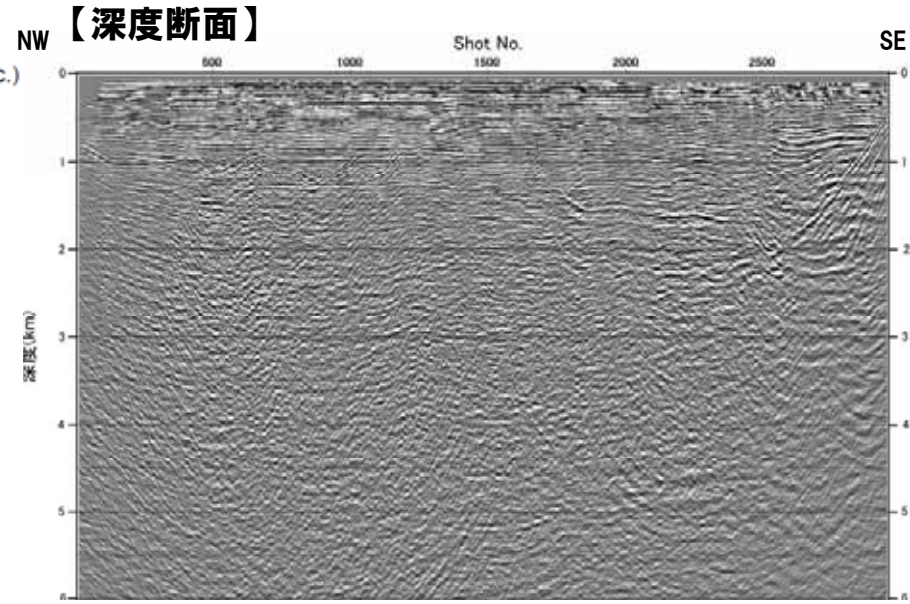
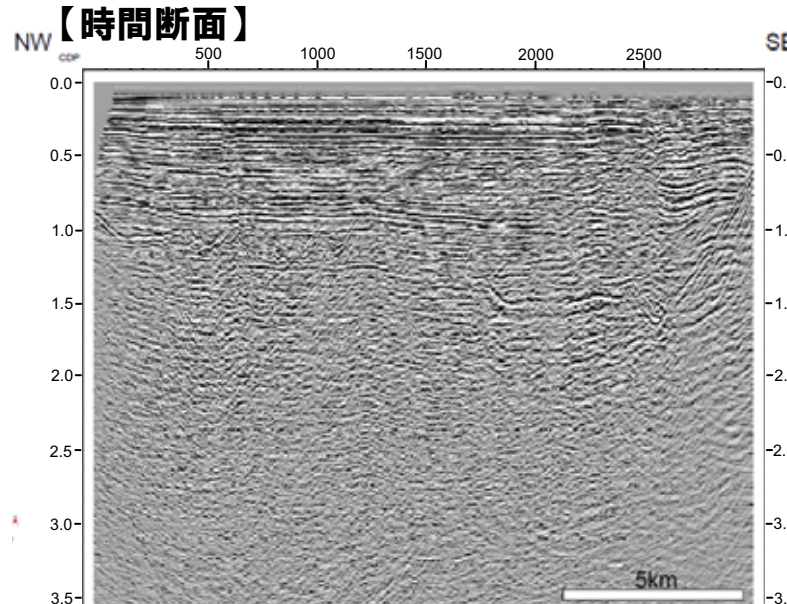
NW【時間断面】

SE



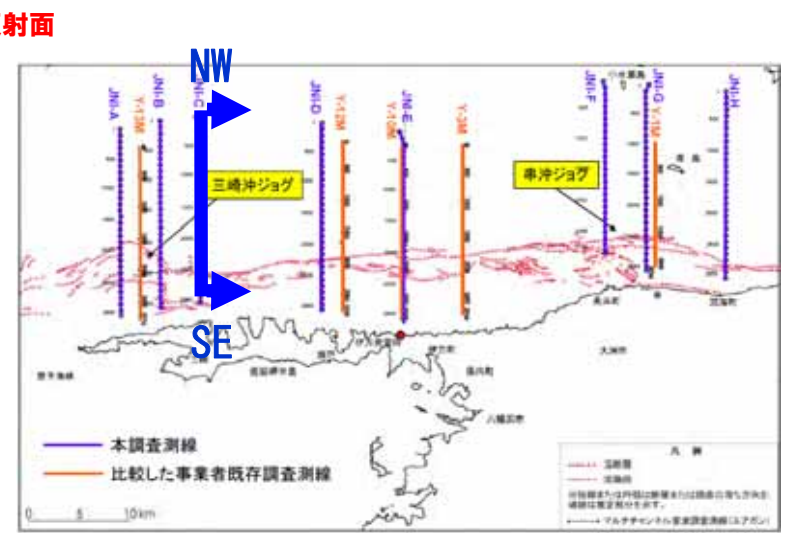
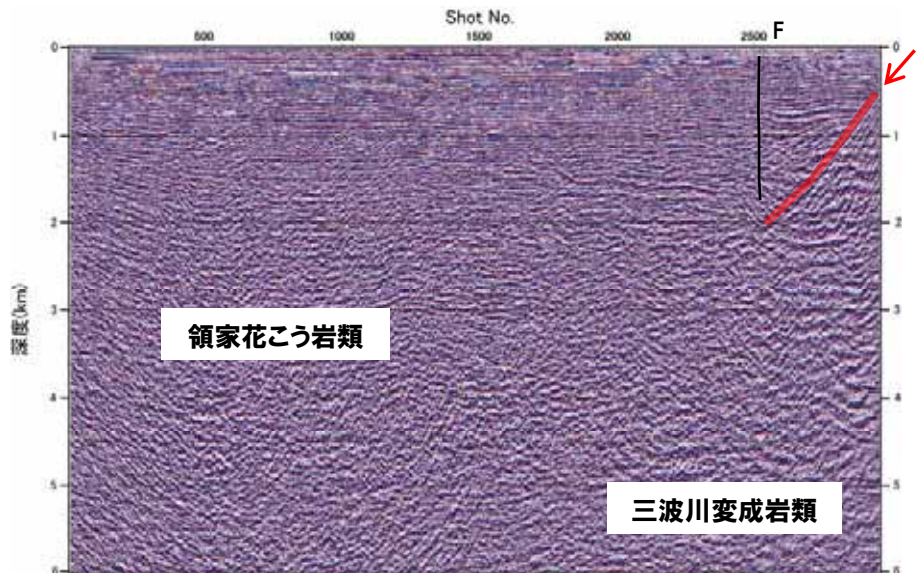
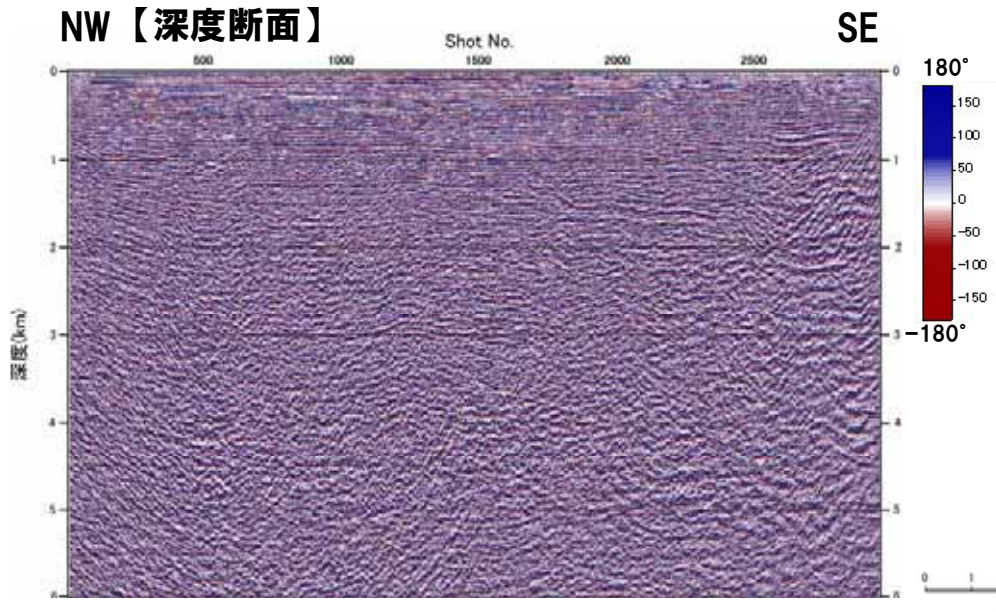
# II 4. 3 (3) - 3 振幅強度表示(JNI-C)

添付資料 図-47,48

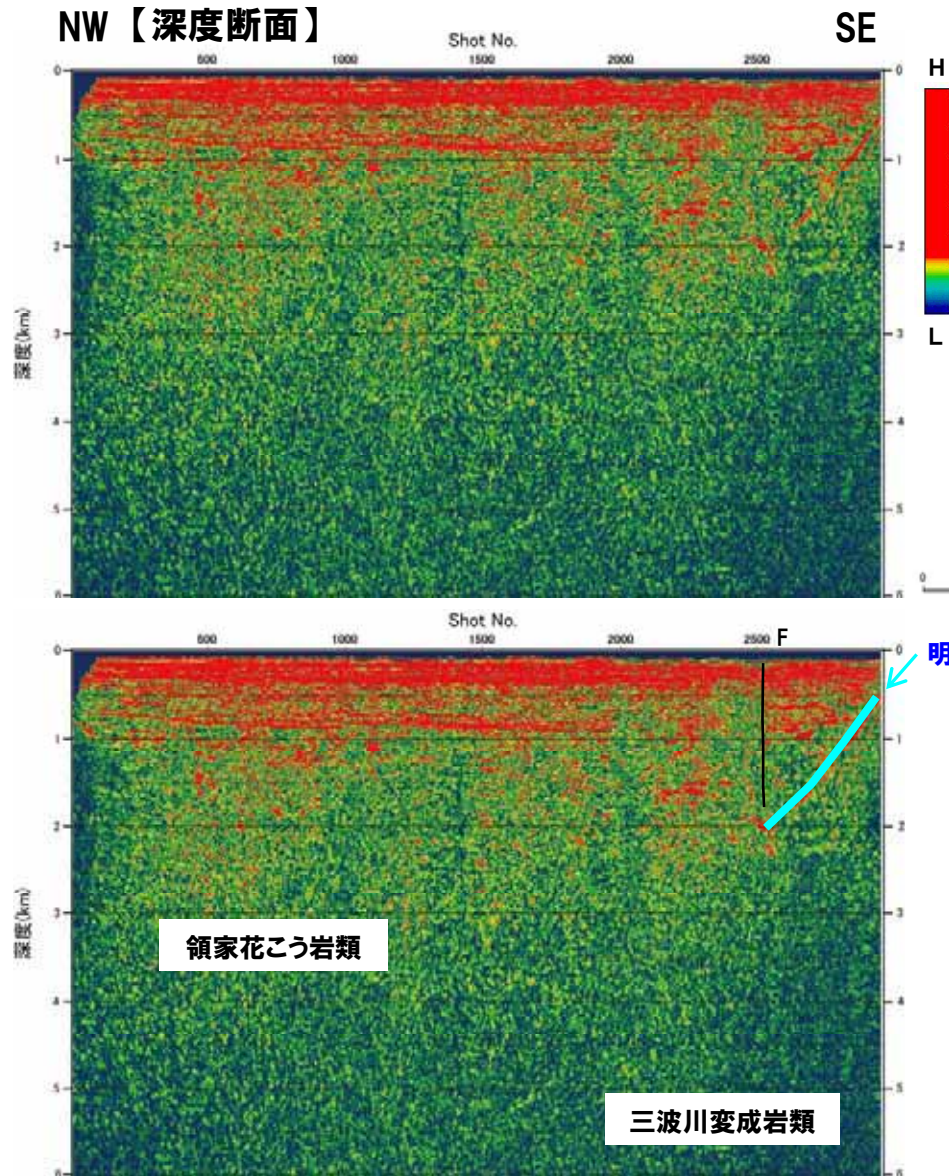




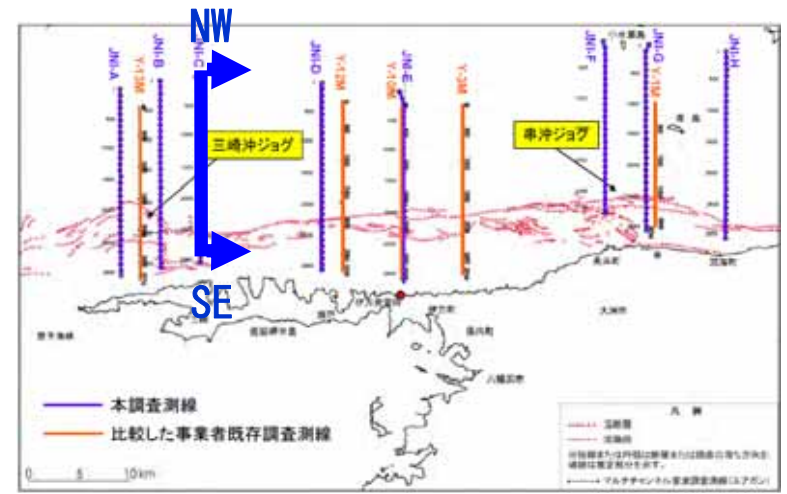
# II 4. 3 (3) - 3① 瞬間位相(JNI-C)



# II 4. 3 (3) - 3② エンベロープ(JNI-C)



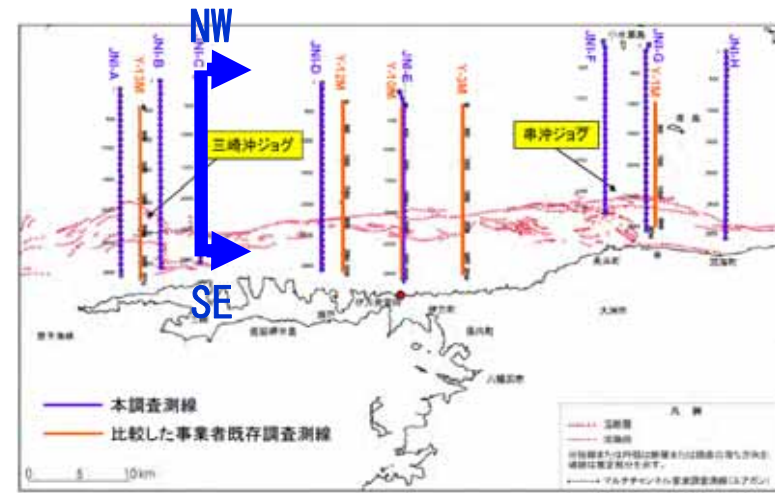
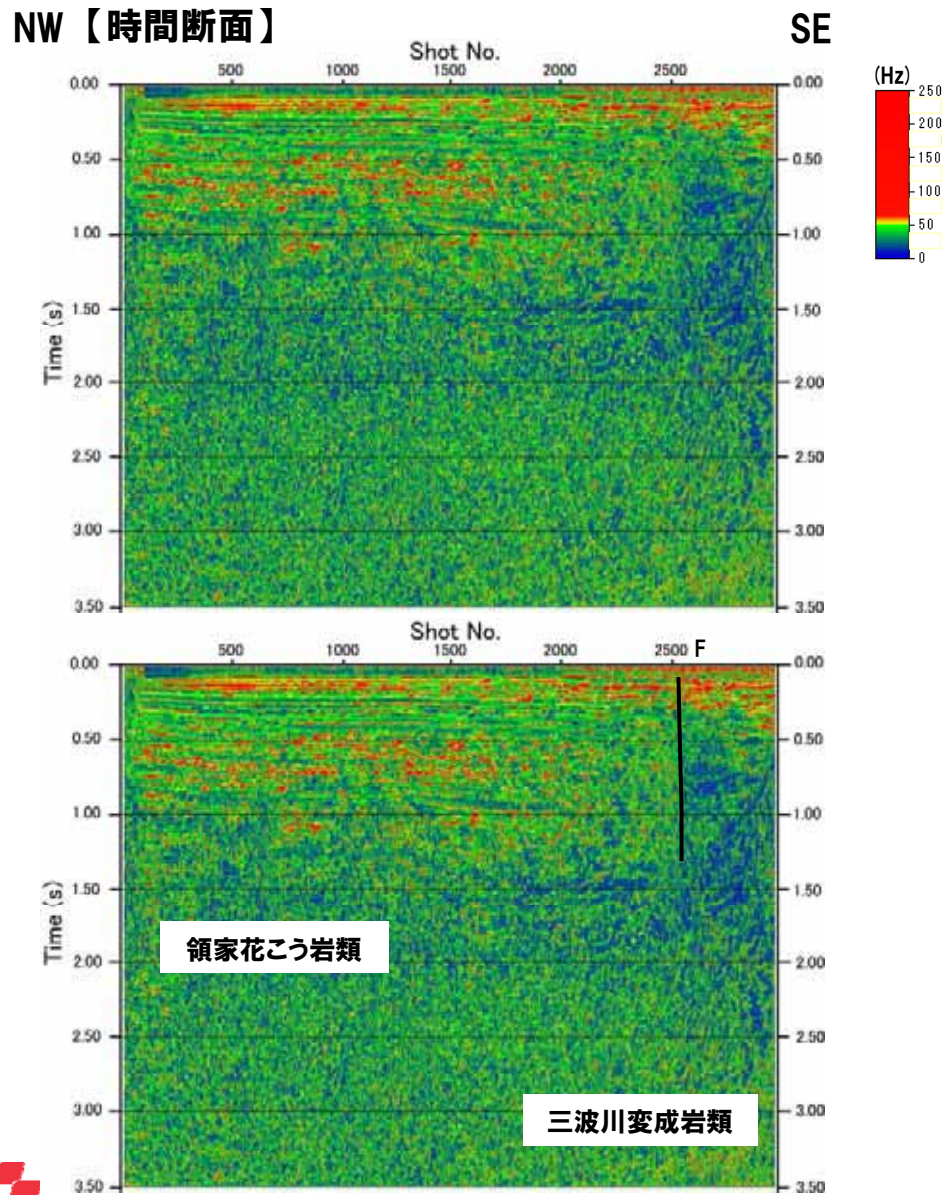
明瞭な反射面





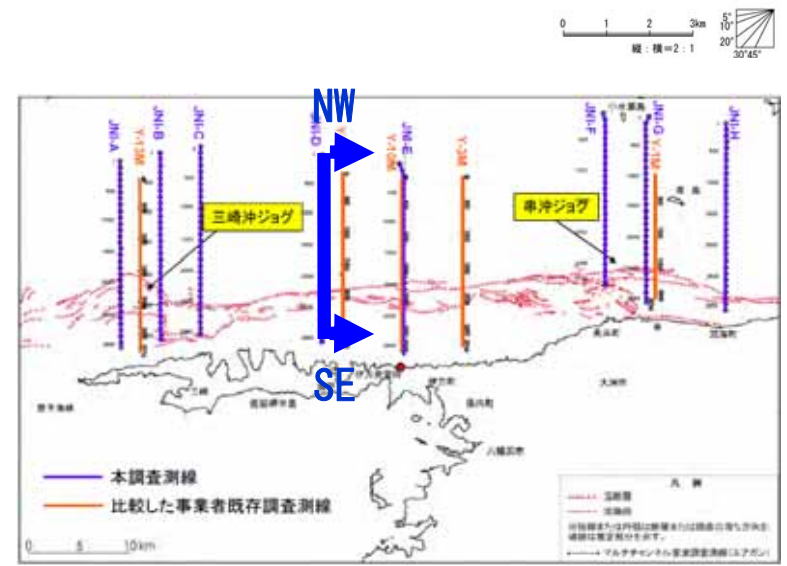
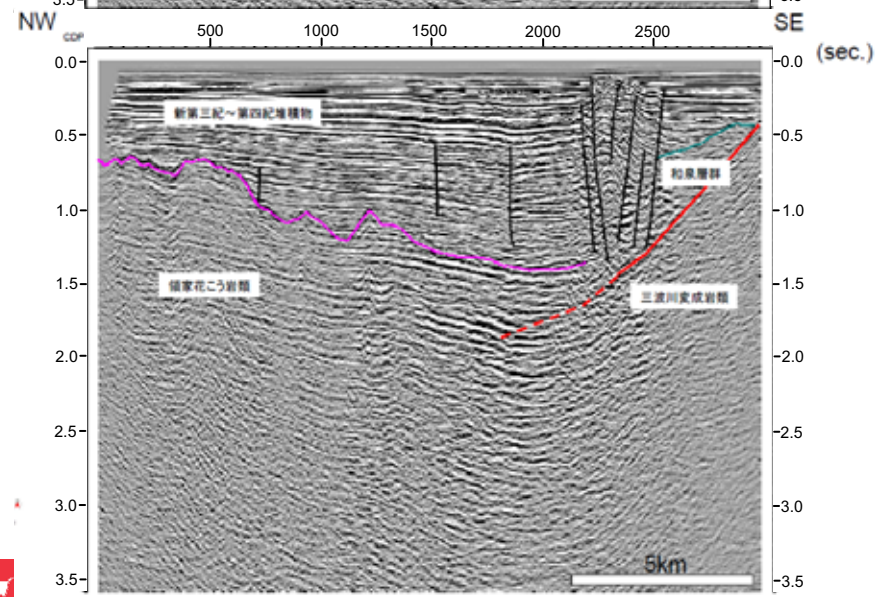
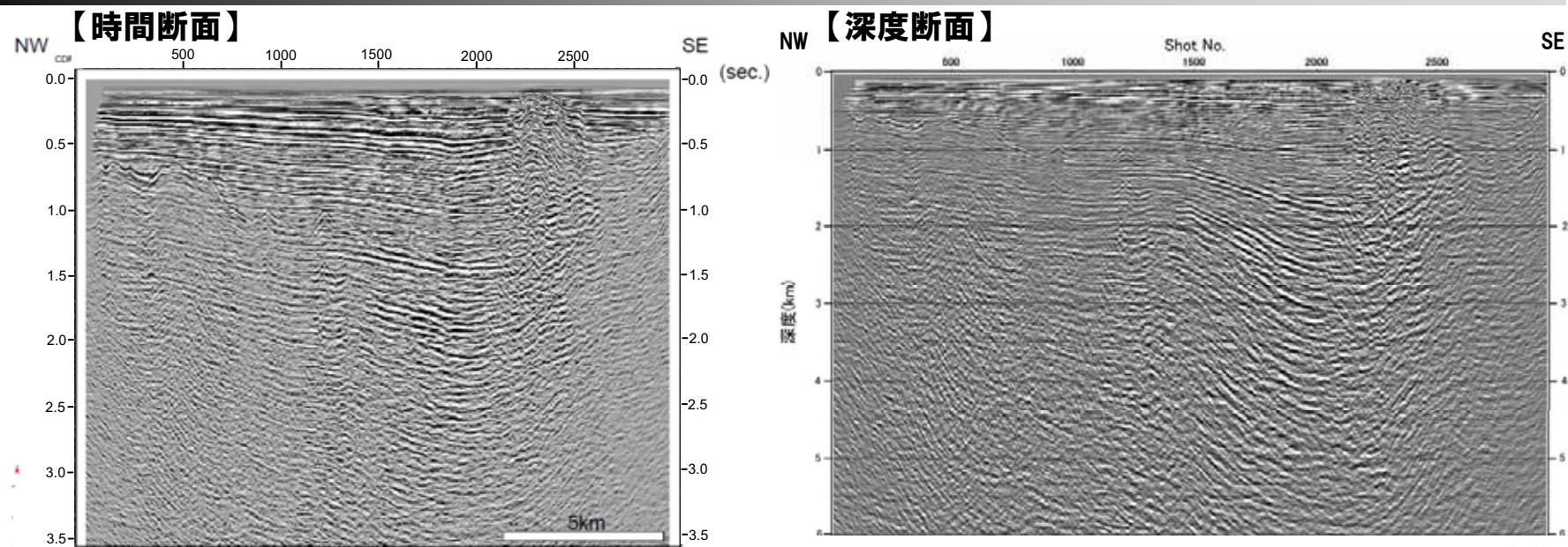
# II 4. 3 (3) - 3③ 瞬間周波数(JNI-C)

添付資料 図-51



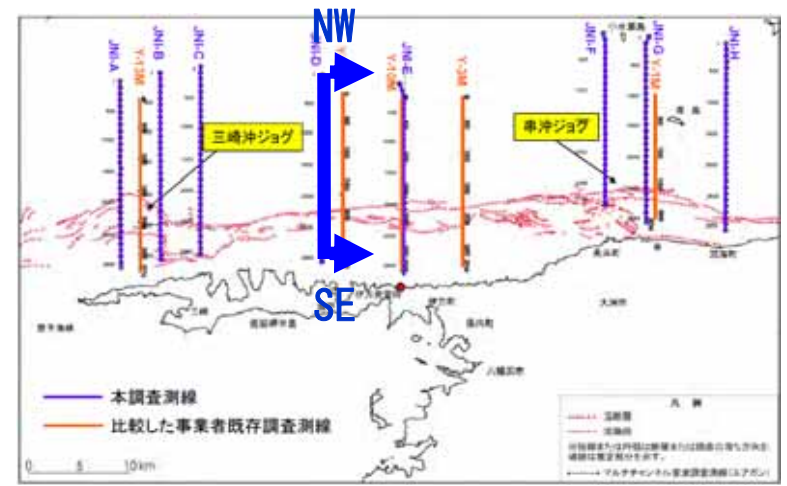
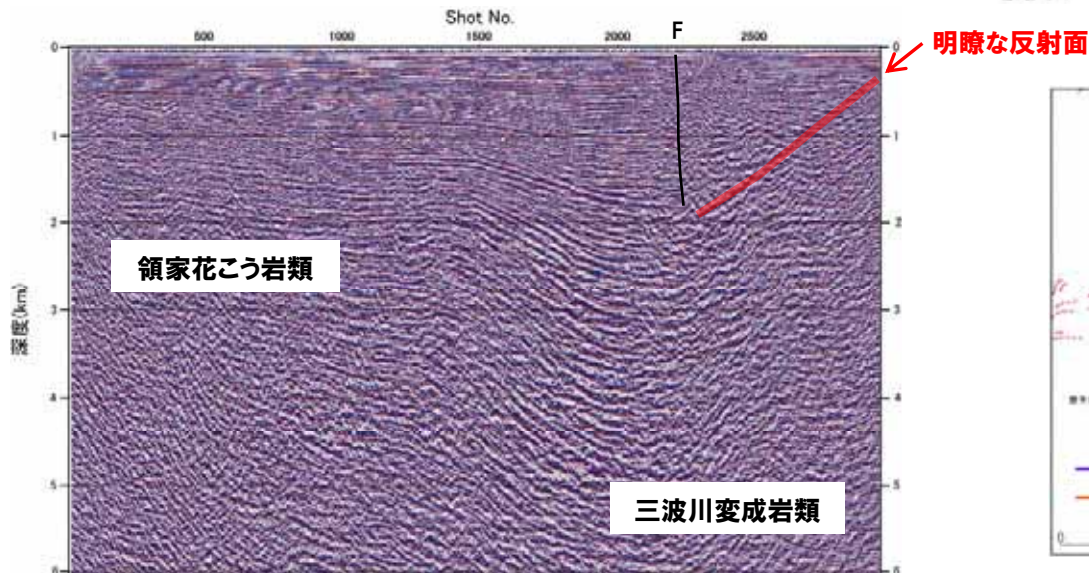
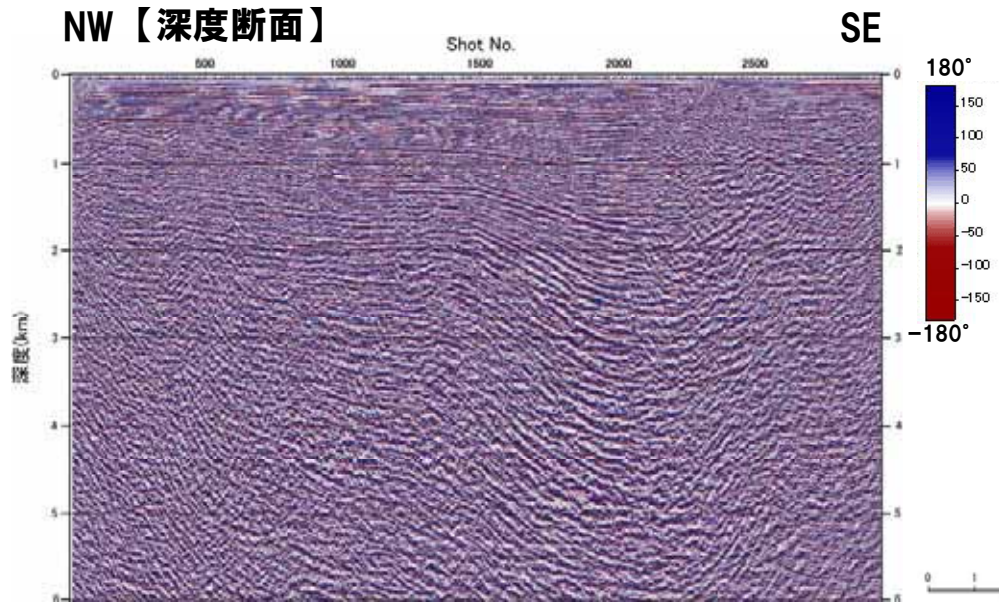
# II 4. 3 (3) - 4 振幅強度表示(JNI-D)

添付資料 図-52,53



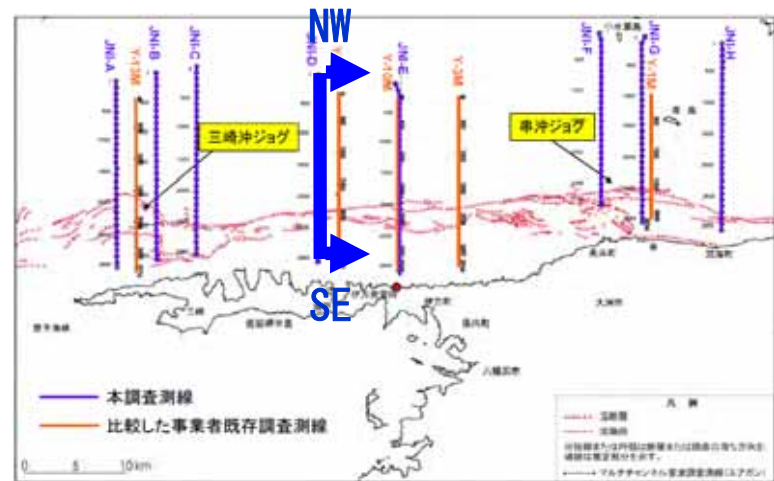
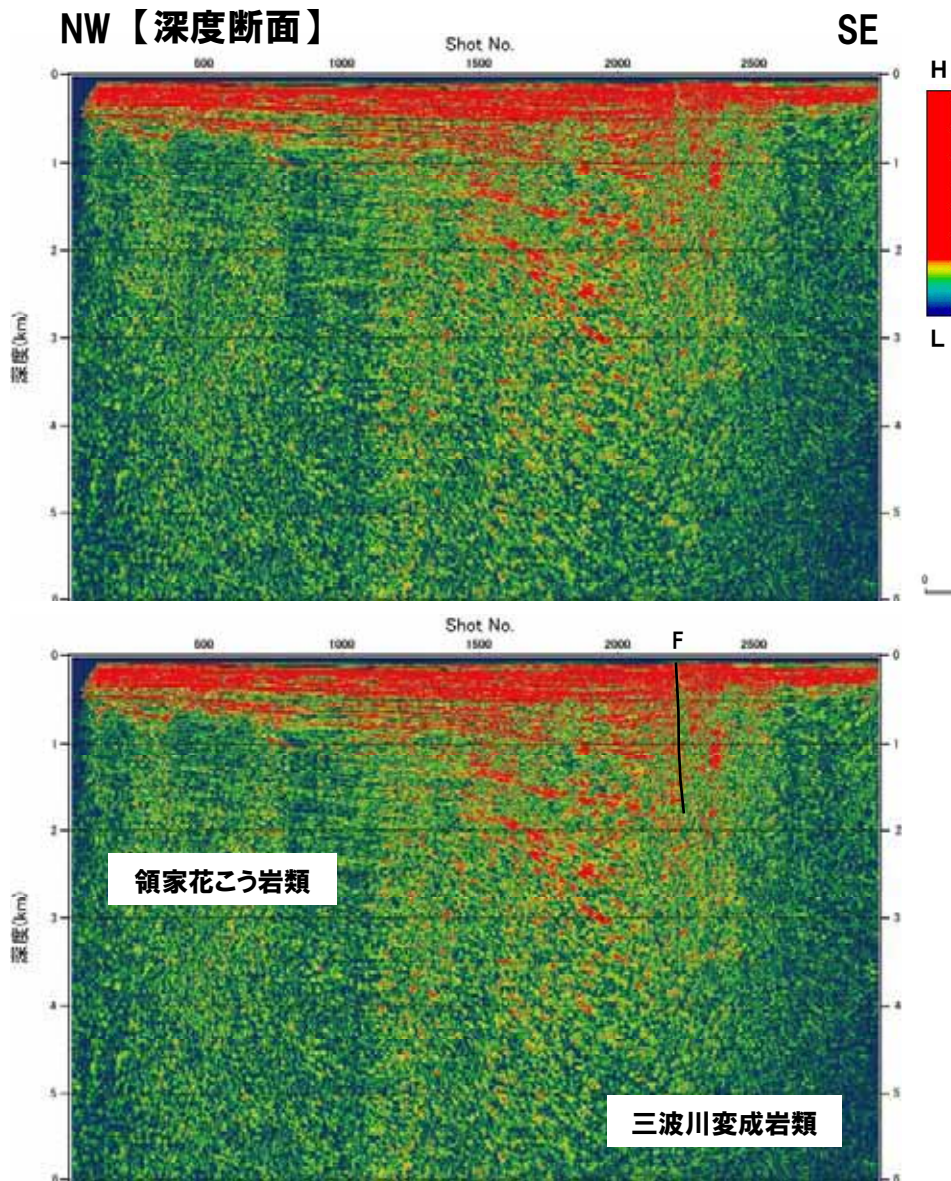


# II 4. 3 (3) - 4① 瞬間位相(JNI-D)



# II 4. 3 (3) - 4② エンベロープ(JNI-D)

添付資料 図-55





# II 4. 3 (3) - 4③ 瞬間周波数(JNI-D)

添付資料 図-56

NW【時間断面】

SE

