

図-19 エアガンによる探査断面図（三崎沖 時間断面）

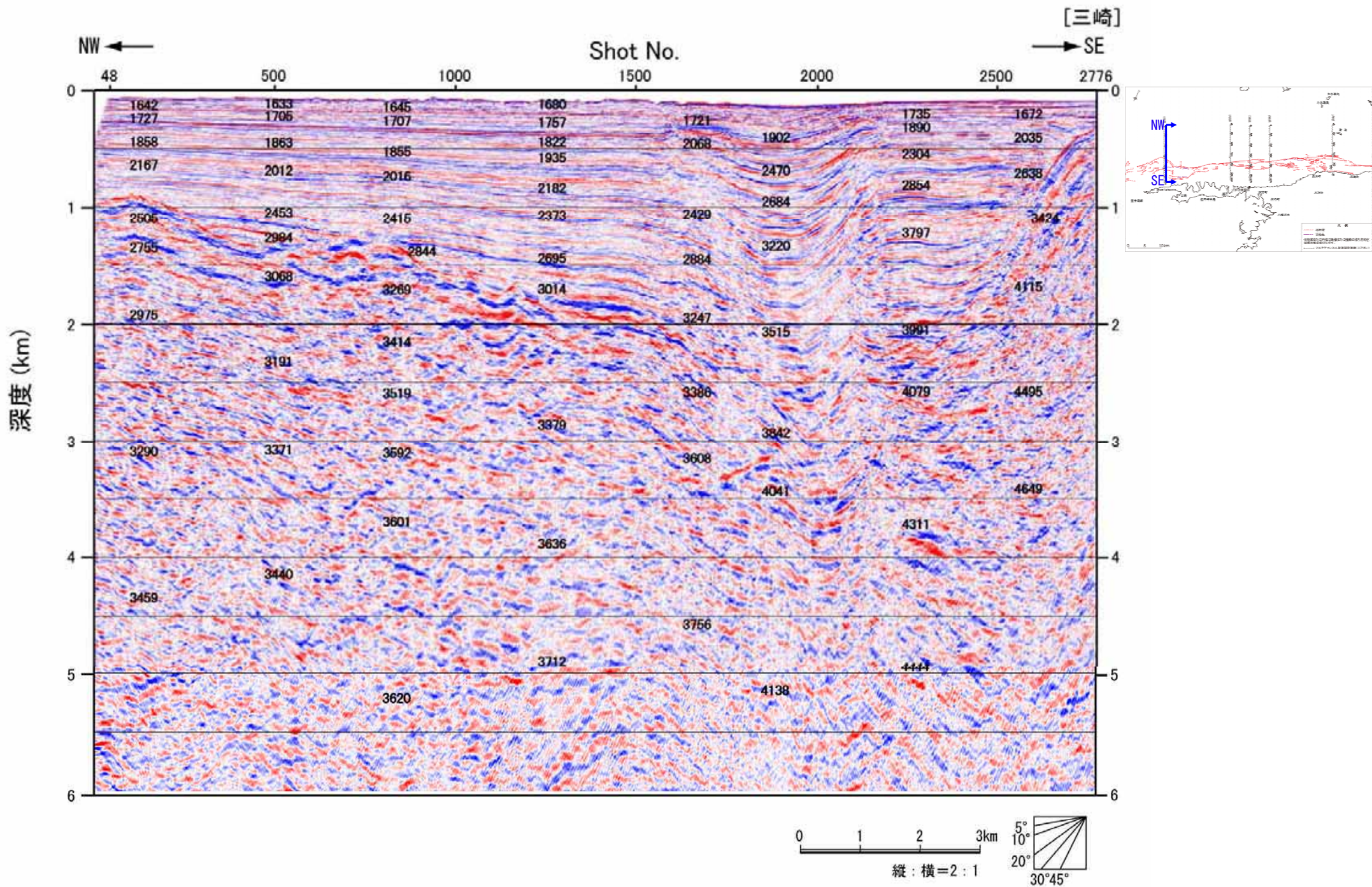
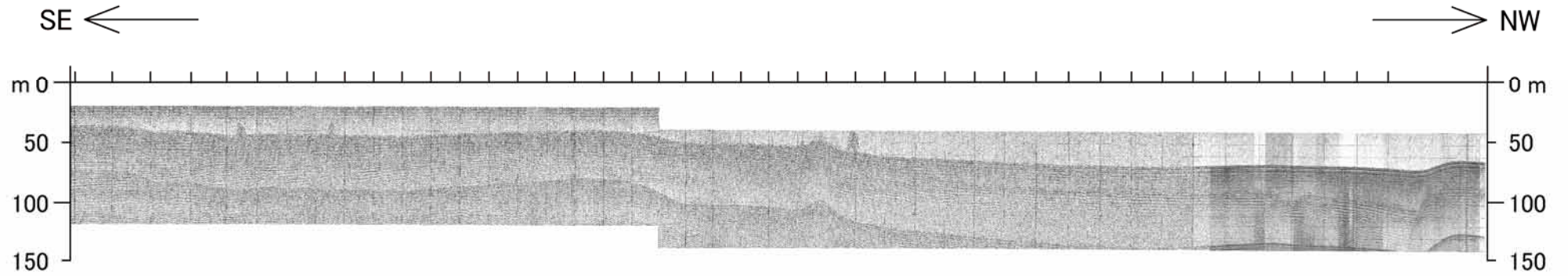


図-20 エアガンによる探査断面図 (三崎沖 深度断面)

ジオパルス

[佐賀関半島]



[佐賀関半島]

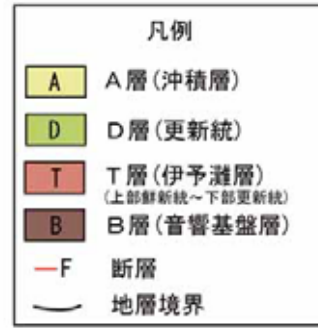
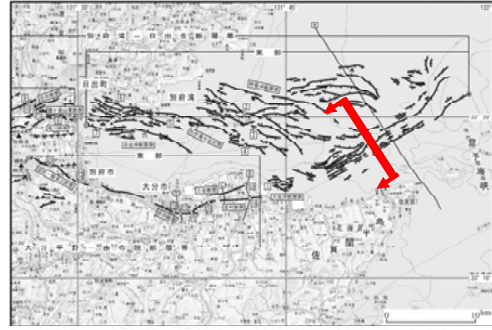
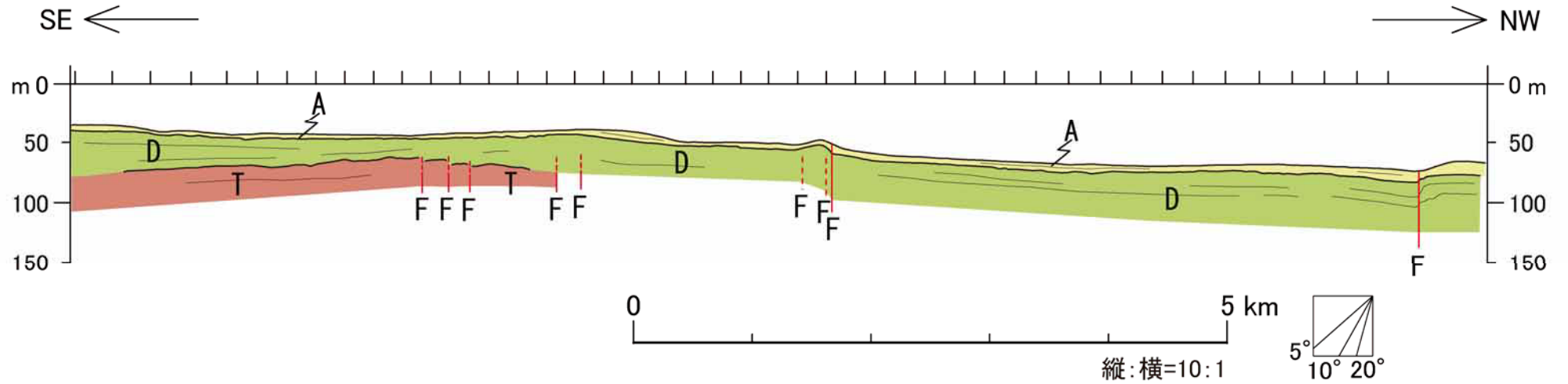


図-21 豊予海峡付近の浅部地下構造 (ジオパルス記録)

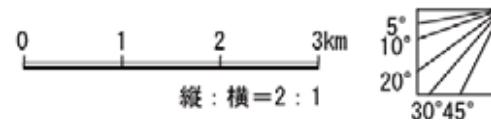
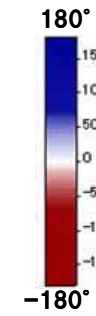
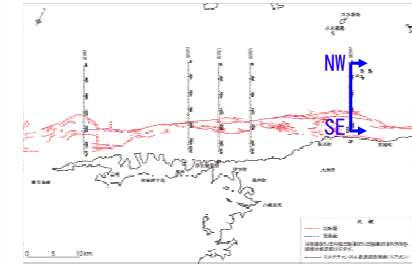
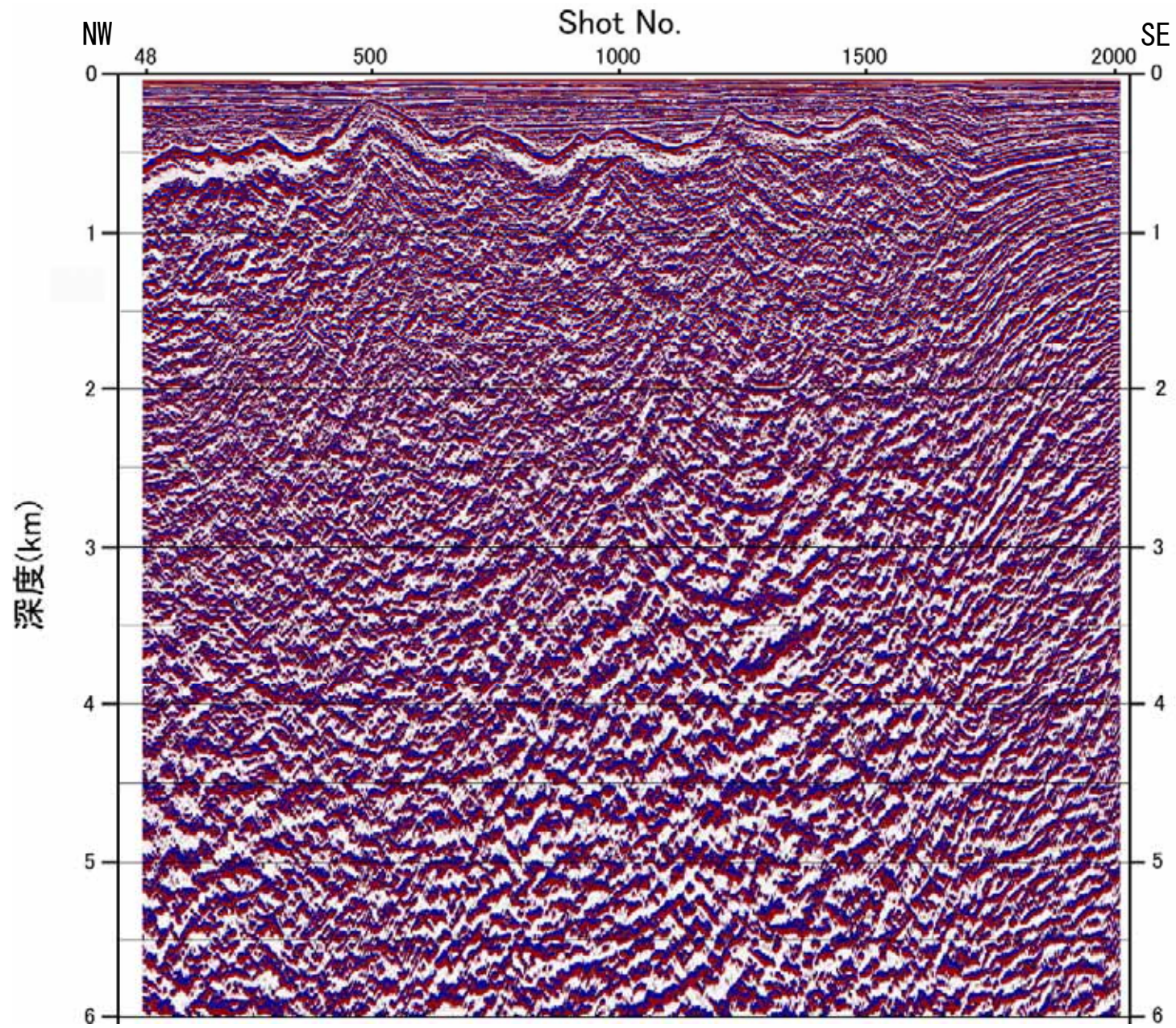


図-22 アトリビュート解析断面図（串沖 瞬間位相）

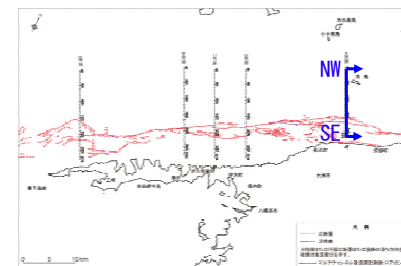
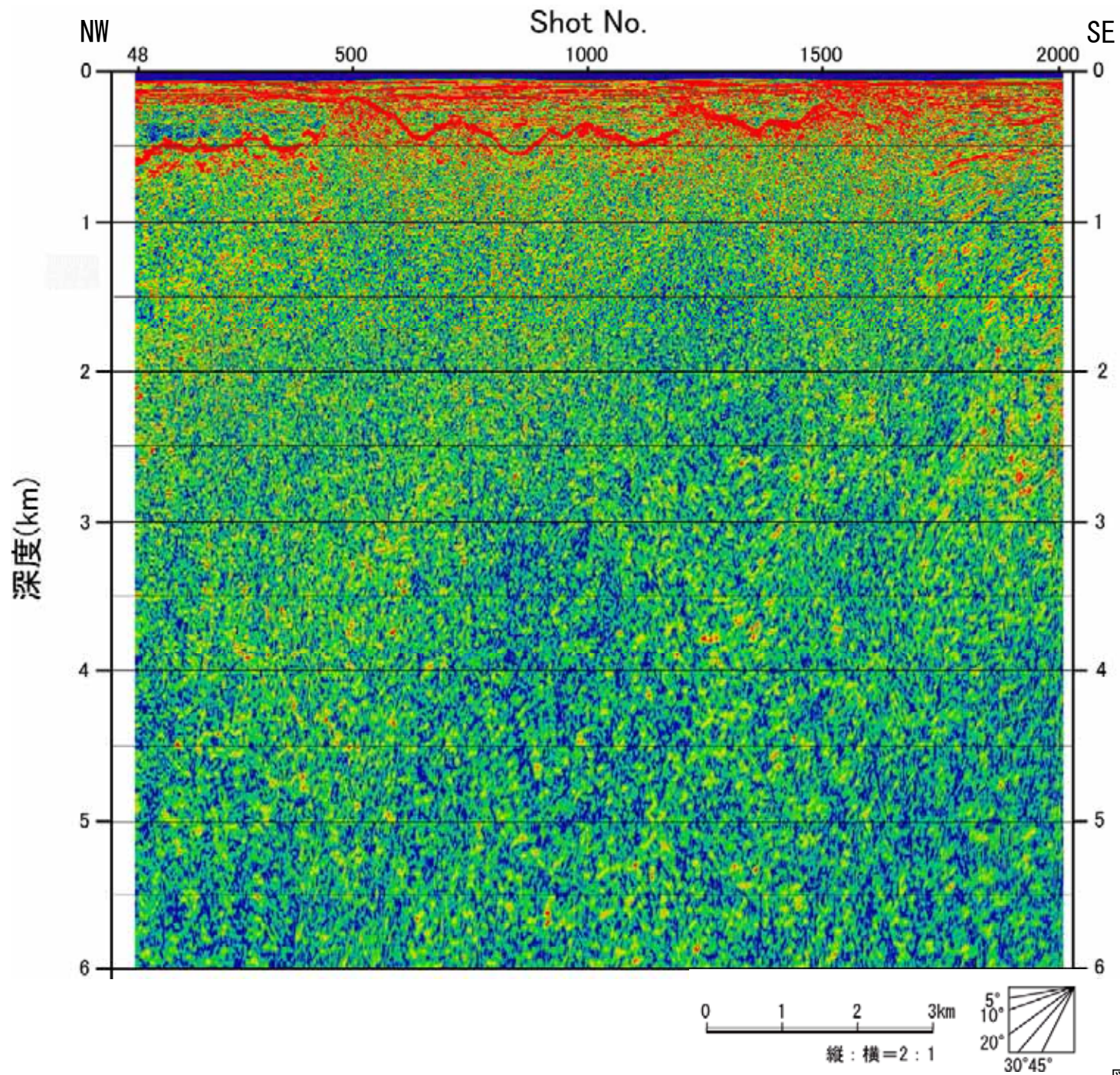


図-23 アトリビュート解析断面図(串沖 エンベロープ)

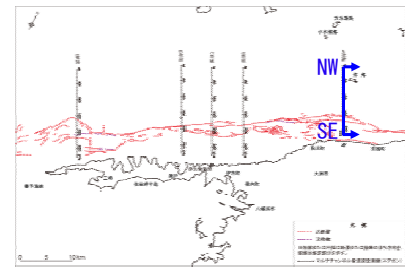
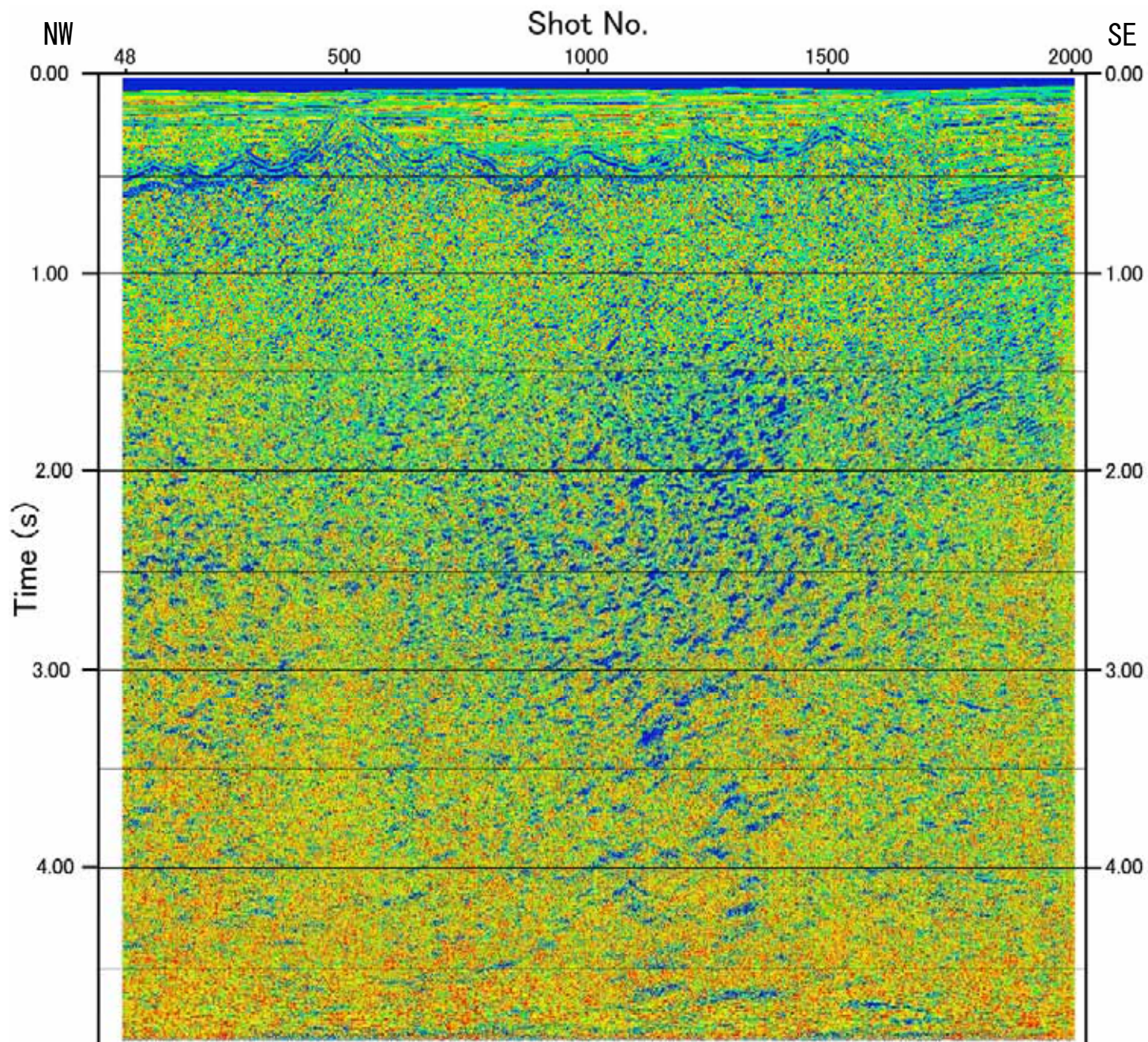


図-24 アトリビュート解析断面図 (串沖 瞬間周波数)

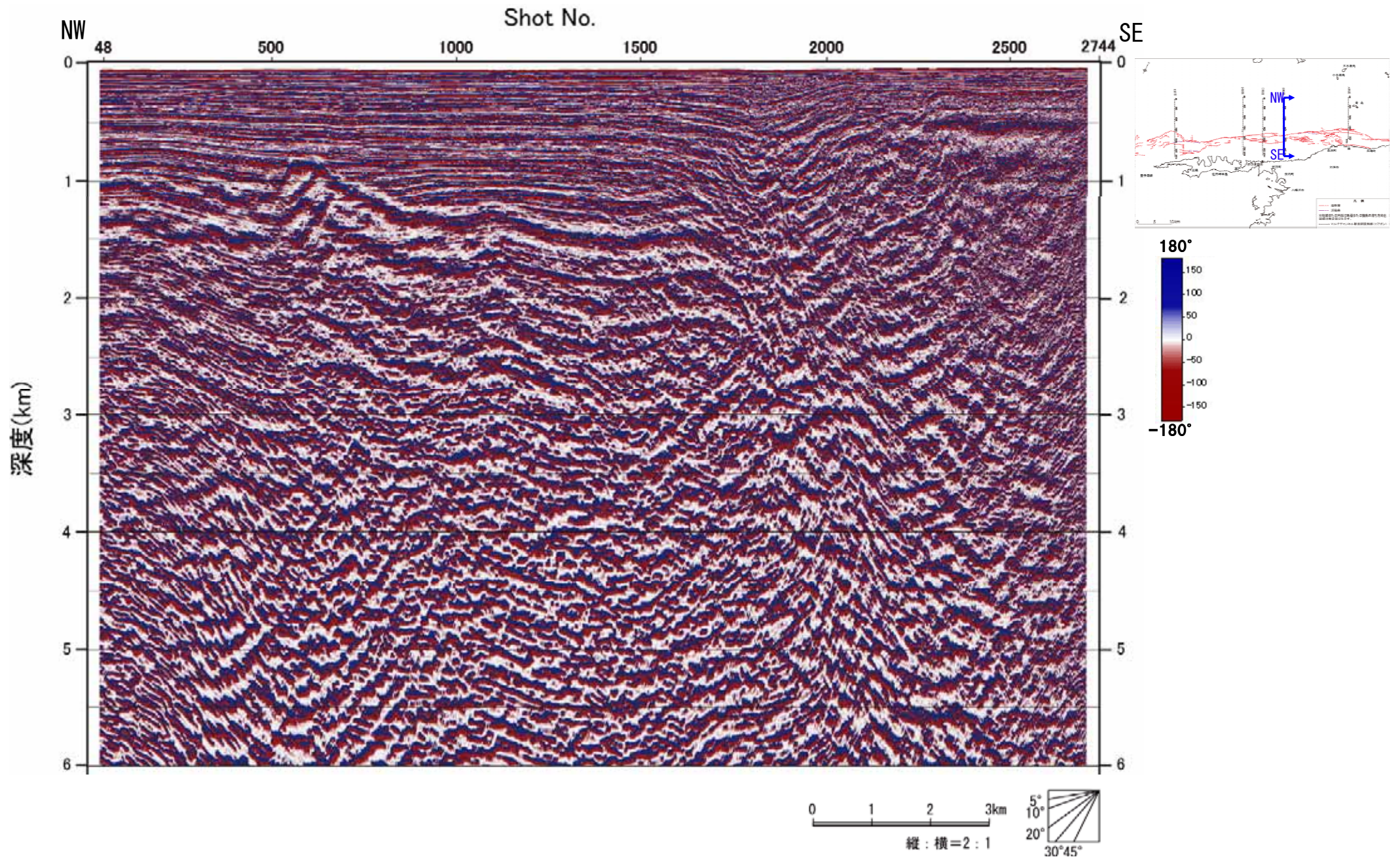


図-25 アトリビュート解析断面図（保内沖 瞬間位相）